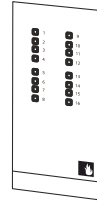


# SIEMENS

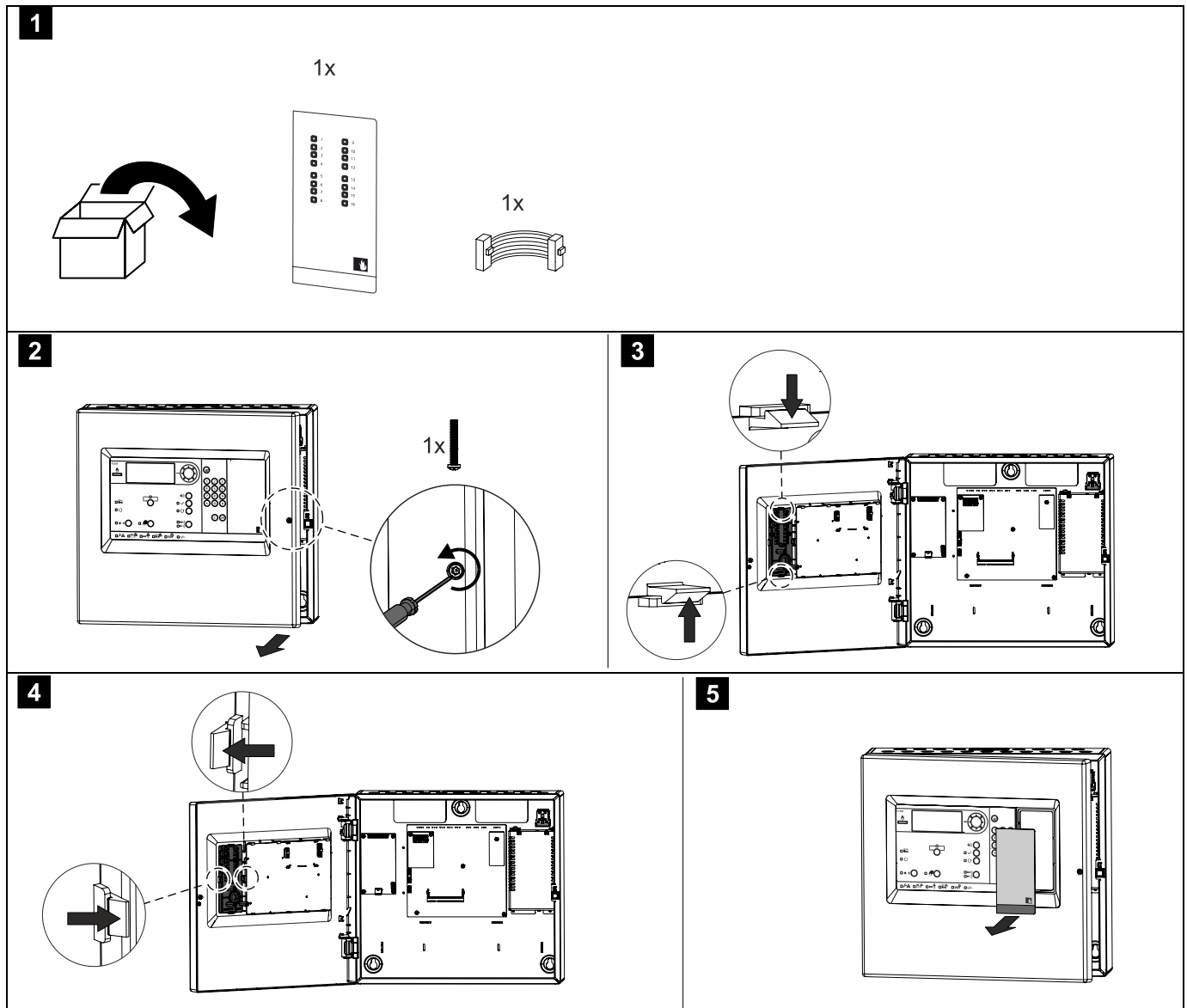
## FTO3602-Z1

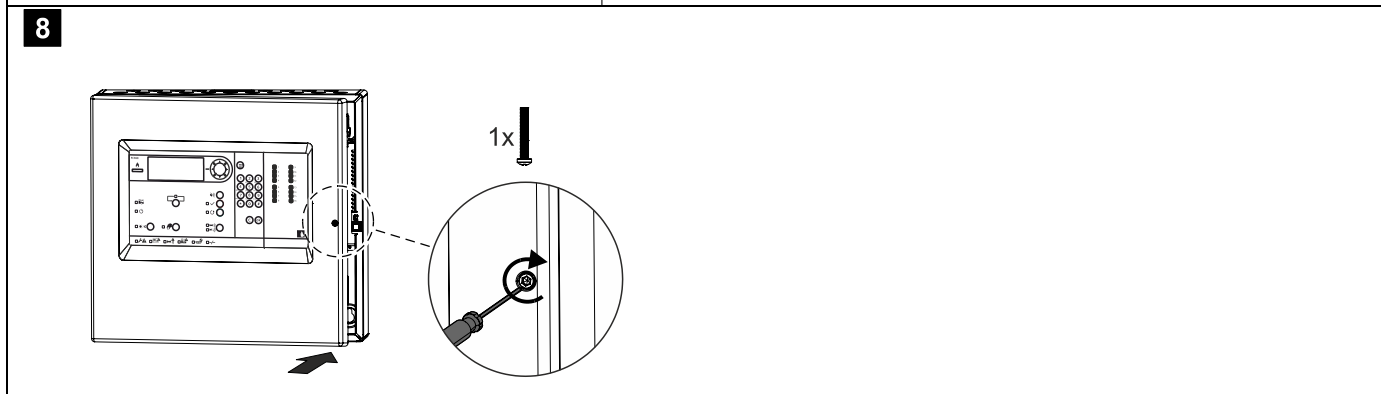
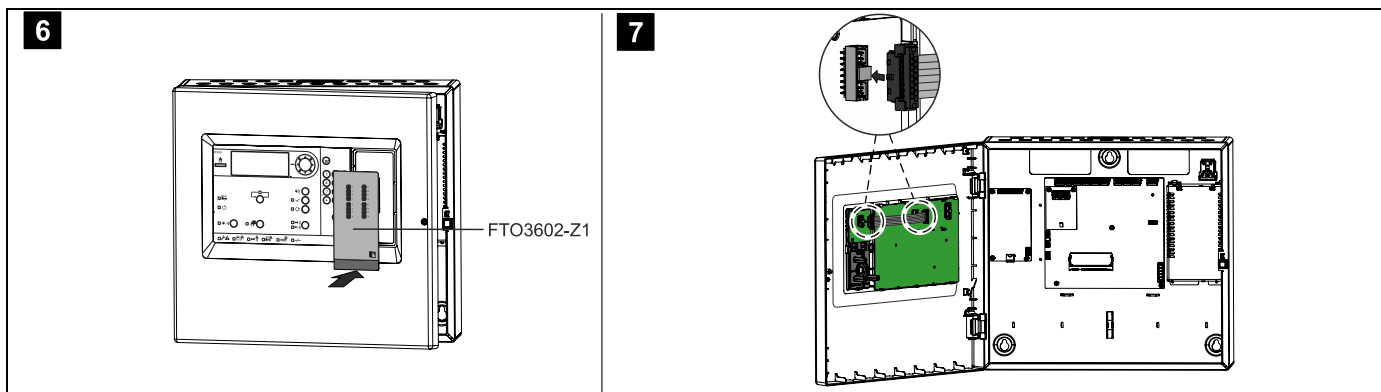
en	LED indicator (16 zones)
de	LED-Anzeige (16 Zonen)
fr	Voyant LED (16 zones)
es	Indicador LED (16 zonas)
it	Indicatore LED (16 zone)

- en Installation
- de Montage
- fr Montage
- es Montaje
- it Montaggio



FTO3602-Z1  
S54433-B117-A1





<b>9</b>	<table border="1"> <tr> <td><b>en</b></td> <td>Test the system</td> </tr> <tr> <td><b>de</b></td> <td>Testen Sie das System</td> </tr> <tr> <td><b>fr</b></td> <td>Testez le système</td> </tr> <tr> <td><b>es</b></td> <td>Pruebe el sistema</td> </tr> <tr> <td><b>it</b></td> <td>Testare il sistema</td> </tr> </table>	<b>en</b>	Test the system	<b>de</b>	Testen Sie das System	<b>fr</b>	Testez le système	<b>es</b>	Pruebe el sistema	<b>it</b>	Testare il sistema
<b>en</b>	Test the system										
<b>de</b>	Testen Sie das System										
<b>fr</b>	Testez le système										
<b>es</b>	Pruebe el sistema										
<b>it</b>	Testare il sistema										

	<b>en</b>	You will find more information in document A6V10421795.
	<b>de</b>	Weitere Informationen finden Sie im Dokument A6V10421795.
	<b>fr</b>	Pour de plus amples informations, se référer au document A6V10421795.
	<b>es</b>	Para más información al respecto, consulte el documento A6V10421795.
	<b>it</b>	Per ulteriori informazioni si rimanda al documento A6V10421795.

Siemens Switzerland Ltd  
 Building Technologies Division  
 International Headquarters  
 Gubelstrasse 22  
 CH-6301 Zug  
 Tel. +41 41 – 724 24 24  
 Fax +41 41 – 724 35 22  
 www.siemens.com/buildingtechnologies

© 2016 Siemens Switzerland Ltd  
 Data and design subject to change without notice.